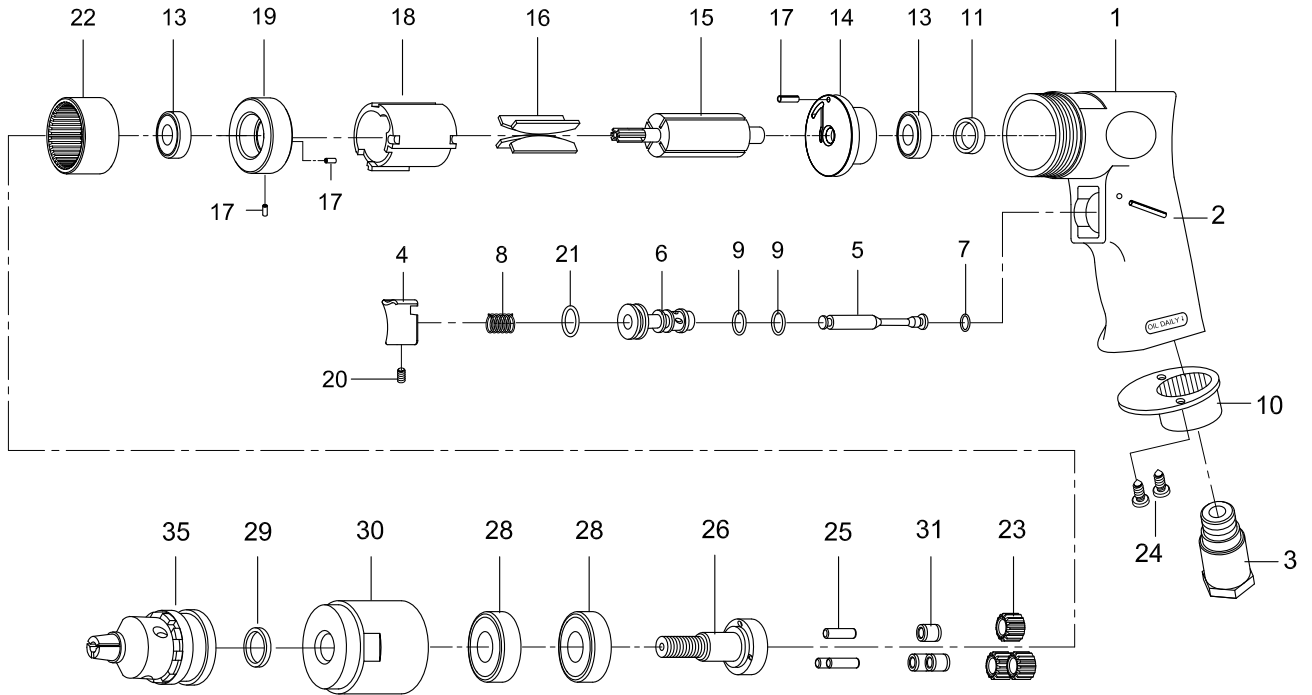


3/8" AIR DRILL



Index No.	Parts No.	Description	Index No.	Parts No.	Description
1	70601	Motor Housing	17	70117	Spring Pin (3) (2x5L)
2	73402	Spring Pin (2.5*22L)	18	70118-22	Cylinder
3	70103	Air Inlet	19	70619	Front End Plate
4	70104	Trigger	20	70935	Set Screw (M4*8L)
5	70105	Valve Stem	21	70123	O-Ring (11.8*2.4)
6	70106	Valve Bushing	22	80222	Internal Gear
7	70107	O-Ring (4.8*1.9)	23	80223	Planet Gear (3)
8	70108	Valve Spring	24	40309	Screw (2) (TS2.9)
9	70109	O-Ring (2) (9.8*1.9)	25	30124	Pin (3) (4*13.8L)
10	70110	Exhaust Diffuser	26	70626	Work Spindle
11	30111	Cap	28	080227	Ball Bearing(2) (6201Z)
13	030113	Ball Bearing (2) (626ZZ)	29	70133	Chuck Spacer
14	70614	Rear End Plate	30	70630	Clamp Nut
15	70615	Rotor	31	80225	Bushing (3)
16	70616	Rotor Blades (4)	35	10035-11	Drill Chuck (3/8")